

# 800 SERIES

## HB-800P PITTSBURGH ROLLFORMER

The Pittsburgh Lock revolutionized the HVAC Industry in the late 1930's and is still used today for its strength and ease in assembling ductwork.

The HB-800 Series Pittsburgh rollforming machines have 8 forming stations with 2 forming positions. One inboard forming position forms the Pittsburgh lock and one auxiliary or outboard forming position has the capability of forming 1 of 3 different profiles.

## HB-800B SNAP LOCK ROLLFORMER

The Button Punch Snap Lock Machines form a two piece seam that greatly simplifies ductwork assembly. The male seam is a button, the female seam is a lock and the two snap together for a flush corner. These machines are available in eight forming station machines. Not only do these locks assemble twice as fast as traditional methods, but because the two pieces nest, they are easier to transport too.

## HB-825 SLIP & DRIVE ROLLFORMER

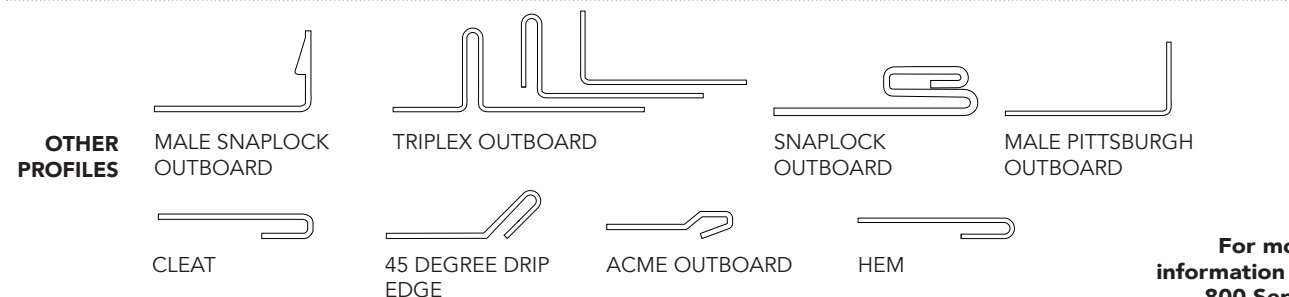
- Inboard tooling on HB-825 for "S" and Drive.
- Optional Outboard tooling is available on all HB-800 Series Roll Formers.
- Four (4) sets of tooling can be installed on the Model HB-825.
- Optional Slitter Attachment on the HB-825 cuts scrap metal to the correct width for producing "S" and Drive cleats.



Optional slitter attachment available

# 800 SERIES

MODEL MODEL	CAPACITY	DEPTH OF POCKET	SPEED	MOTOR/ VOLTAGE	DIMENSIONS/ WEIGHT
<b>HB-800P-20</b>	20-26 gauge	5/16" Uses approximately 1" of material	90 feet per minute	115/230 volts, 60 cycle, single phase, A.C. 1,800 RPM. Other motors available upon request	Length - 60" Width - 24" Height - 37" Passline - 34" Weight - 950 lbs.
<b>HB-800P-18</b>	18-22 gauge	1/2" Uses approximately 1-3/8" of material	90 feet per minute	230/460 volts, 60 cycle, 3 phase, A.C. 1,800 RPM. Other motors available upon request	Length - 60" Width - 24" Height - 37" Passline - 34" Weight - 950 lbs.
<b>HB-800P-16</b>	16-20 gauge	1/2" Uses approximately 1-3/8" of material	50 feet per minute	230/460 volts, 60 cycle, 3 phase, A.C. 3,600 RPM. Other motors available upon request	Length - 60" Width - 24" Height - 37" Passline - 34" Weight - 950 lbs.
<b>HB-800B-24</b>	24-28 gauge	1/2" Uses approximately 1-13/16" of material	90 feet per minute	3 H.P. 230/460 volts, 60 cycle, 3 phase, A.C. 3,600 RPM. Other motors available upon request.	Length - 60" Width - 24" Height - 37" Passline - 34" Weight - 950 lbs.
<b>HB-800B-20</b>	20-26 gauge	1/2" Uses approximately 1-13/16" of material	90 feet per minute	3 H.P. 230/460 volts, 60 cycle, 3 phase, A.C. 3,600 RPM. Other motors available upon request.	Length - 60" Width - 24" Height - 37" Passline - 34" Weight - 950 lbs.
<b>HB-800B-18</b>	18-24 gauge	1/2" Uses approximately 1-13/16" of material	90 feet per minute	5 H.P. 230/460 volts, 60 cycle, 3 phase, A.C. 1,800 RPM. Other motors available upon request.	Length - 60" Width - 24" Height - 37" Passline - 34" Weight - 950 lbs.
<b>HB-825</b>	20-26 gauge	1-1/16" for Slip and 1-1/8" for Drive	90 feet per minute	5 H.P. 230/460 volts, 60 cycle, 3 phase, A.C. 3,600 RPM. Other motors available upon request.	Length - 48" Width - 24" Height - 42" Passline - 34" Weight - 1000 lbs.



For more information on 800 Series 