

## Hydraulic Power Notchers with TRI-GIDE™

90° Fixed Angle Models:

*Lite, Eagle, Eagle 250, Silver Eagle, Golden Eagle*

Variable Angle Models:

*Vari IV, K30/120*



EAGLE  
(LB12)



LITE



SILVER EAGLE W/ PUNCH  
(LB13-KS)



GOLDEN EAGLE  
(LB15/2000)

(Photos show machines with guards removed)

## Affordable & Reliable Precision Notching

- *Fixed angle machines to 3/8" capacity*
- *Variable angle machines to 1/4" capacity*
- *Clean cuts guaranteed*
- *Off-center cuts are not an issue*
- *Extra long blade life is assured due to the unique design features in our TRI-GIDE system*
- *Internal stop bar for shearing on most models*



*simply better!*

# BOSCHERT

## Two station machines



*Silver Eagle (LB13) Coping station with standard 1" x 4" blades*



*Silver Eagle QUICK with quick-change tool sets for special cuts and notches*



*Silver Eagle/Punching with standard Trumpf tooling*

*Most of our machines can be equipped with a second station. More details are shown in the technical data section. On the second station, we offer the most flexible range of options including press arms for unitools – please send us your drawings or requirements.*

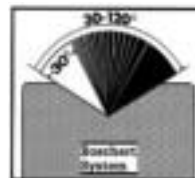
## Variable angle machines



*Vari-IV (Mini-S) with angles from 30 – 120 degrees and capacity of 5/32" in mild steel*







*K30-120 variable angle notcher with full 1/4" capacity in mild steel. Notches from 30 – 120 degrees*



*The BOSCHERT variable angle system is unique in the world. A 30° upper blade is directly connected to corresponding lower blades. All notches of more than 30° are made automatically with a left and right notch. Pneumatic power rotates the blades after each cut. This innovative system guarantees exceptionally long blade life compared to other conventional machines.*

## BOSCHERT Notcher Technical Data

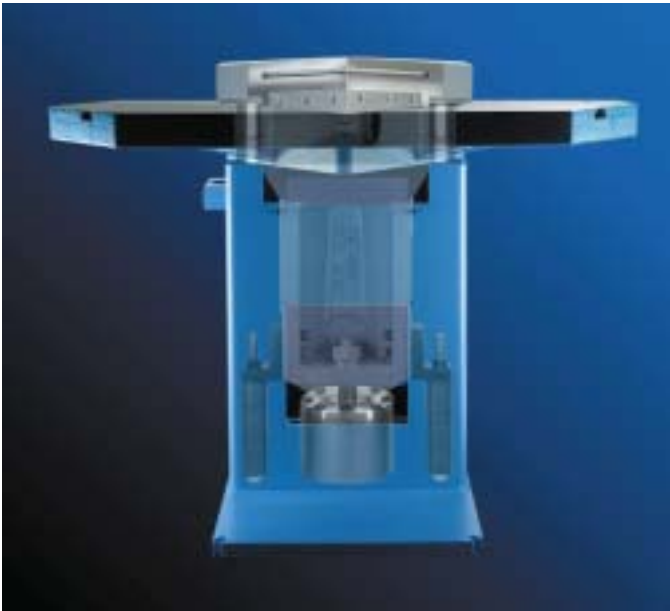
Model	Cutting Capacity	Cut Length	Cut Angle	Machine Weight	Overall Dimensions	Table Dimensions	2nd Station	Motor Size
Lite	5/32" (10ga.)	8-7/8" x 8-7/8"	90°	1452 lbs	49" x 36" x 53"	35" wide by 25"	/	4.5 hp
Eagle (LB 12)	1/4" (3/16")	8-7/8" x 8-7/8"	90°	1540 lbs	49" x 36" x 53"	35" wide by 25"	/	6.5 hp
Silver Eagle (LB 13)	1/4" (5/32")	8-7/8" x 8-7/8"	90°	2200 lbs	53" x 43" x 53"	43" wide by 31"	/	6.5 hp
Silver Eagle w/cope	1/4" (5/32")	8-7/8" x 8-7/8"	90°	2420 lbs	53" x 43" x 50"	43" wide by 44.5"	 1" by 4"	6.5 hp
Silver Eagle w/punch	1/4" (5/32")	8-7/8" x 8-7/8"	90°	2420 lbs	53" x 43" x 50"	43" wide by 44.5"	Ø 1.2"	6.5 hp
Silver Eagle Quick	1/4" (5/32")	8-7/8" x 8-7/8"	90°	2420 lbs	53" x 43" x 50"	43" wide by 44.5"	1 x 4" 15-45° x 4"	6.5 hp
Golden Eagle LB15/2000	3/8"* (1/4")*	8-7/8" x 8-7/8"	90°	2420 lbs	53" x 43" x 50"	43" wide by 31"	/	6.5 hp
Golden Eagle w/cope	3/8"* (1/4")*	8-7/8" x 8-7/8"	90°	2640 lbs	53" x 43" x 50"	43" wide by 44.5"	 1" by 4"	6.5 hp
Golden Eagle w/punch	3/8"* (1/4")*	8-7/8" x 8-7/8"	90°	2640 lbs	53" x 43" x 53"	43" wide by 44.5"	Ø 1.2"	6.5 hp
Golden Eagle Quick	3/8"* (1/4")*	8-7/8" x 8-7/8"	90°	2640 lbs	53" x 43" x 50"	43" wide by 44.5"	1 x 4" 15-45° x 4"	6.5 hp
Vari-IV (Mini S)	5/32" (10ga.)	5.9" x 5.9"	30 - 120°	1870 lbs	49" x 39" x 46"	39" wide by 26"	/	6.5 hp
Vari-IV w/cope	5/32" (10ga.)	5.9" x 5.9"	30 - 120°	2200 lbs	51" x 39" x 49"	39" wide by 44.5"	 1" by 4"	6.5 hp
Vari-IV w/punch	5/32" (10ga.)	5.9" x 5.9"	30 - 120°	2200 lbs	51" x 39" x 51"	39" wide by 44.5"	Ø 1.2"	6.5 hp
K30-120	1/4" (3/16")	7.9" x 7.9"	30 - 120°	3520 lbs	59" x 51" x 54"	39" wide by 29"	/	6.5 hp
K30-120 w/cope	1/4" (3/16")	7.9" x 7.9"	30 - 120°	4180 lbs	59" x 51" x 54"	63" wide by 39"	 1" by 4"	6.5 hp
K30-120 w/punch	1/4" (3/16")	7.9" x 7.9"	30 - 120°	4400 lbs	59" x 51" x 54"	63" wide by 39"	Ø 4"	6.5 hp

( ) Stainless, \* Reverse blade used

# BOSCHERT

**Precision, Durability & Productivity**

## Hydraulic Power Notchers with TRI-GIDE™



### **BOSCHERT** Patented Quality

**BOSCHERT** stands out among the many corner notchers available on the world market today. With over 50 years experience in building notchers, **BOSCHERT** is accepted world-wide as the best that is built.

The most unique feature of the **BOSCHERT** notcher is our patented TRI-GIDE ram guidance system that gives our machines the greatest accuracy and durability of any notcher made.

"Tri" is for the three large guiding cylinders that are integral to the ram. Two cylinders are at the top of the ram, near the blades. The third is in the base and fully integrated with the hydraulic piston.

"Gide" is for the precise vertical travel of the ram. Cutting torque is distributed to all three cylinders evenly assuring the smoothest cuts in all ranges of material.

TRI-GIDE has eliminated:

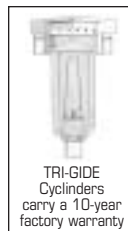
- Uneven wear and replacement problems associated with traditional designs
- Frequent blade sharpening
- Adjusting clearances for different materials

Exclusive Benefits of TRI-GIDE:

- Extremely long blade life due to precise, rigid ram travel
- Burr free cuts on all material within capacity
- Off center loading presents no problem
- Trouble-free self lubricating system



**BOSCHERT'S** modern plant in Germany's Black Forest region.



*simply better!*

**Boschert Precision Machinery, Inc.**  
12400 W. Cameron Avenue  
PO Box 409  
Butler, WI 53007-0409  
800-354-3737 FAX 800-354-6920  
sales@boschertusa.com  
www.boschertusa.com

